



Dodge 2003- 2008 Ram 2500/3500  
Grille Guard  
Installation Instructions

800-504-5684  
info@bigdogbumpers.com  
www.bigdogbumpers.com

**\*\* Installation of this product requires either removing air dam or cutting (2) 1/2" slits in air dam. \*\***

1) Remove two factory bolts that mount radiator. Retain for future installation. ( see figure 1 )

2) Remove factory bolts that mount bumper to truck frame and discard. ( see figure 2 )

3) Install mounting bracket provided on the inside of the truck frame. Secure in place with (4) 1/2" x 5" bolts provided. Ensure that welded gusset faces toward the outside of the truck. ( see figure 3 )



Figure 1

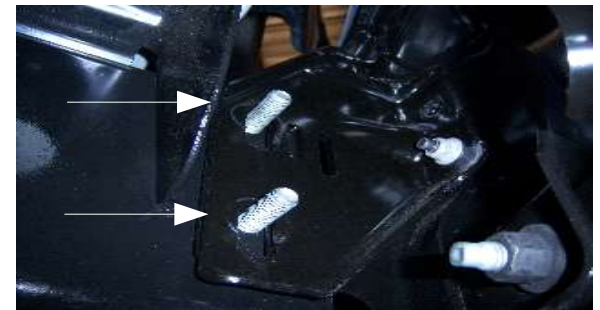


Figure 2



Figure 3

4) With both brackets secured, take a measurement between the two and assure that it is 30 9/16". Tighten bolts with 75 lbs of torque. ( see figure 4 )

5) Cut and break off 1/2" slit from the air dam directly in front of the brackets to allow grille guard to fit through. ( see figure 5 )

6) Lift grille guard and slide through air dam, secure to brackets using (4) 1/2" x 2" bolts provided. Moderately tighten at this time. ( see figure 6 )

7) Remove the 2 top bolts from the tow hooks and discard. Install "L" shaped bracket provided over tow hook and secure in place with (4) 7/16"- 20 x 2 1/4" black bolts provided.

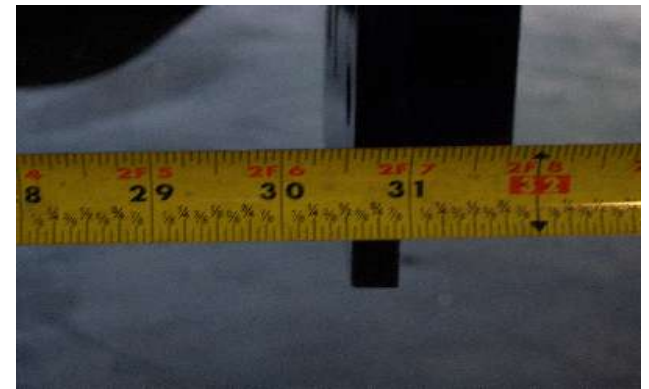


Figure 4



Figure 5



Figure 6

8) Attach opposite end of bracket to upright with (2) 1/2" x 1 1/2" dome head bolts provided. Adjust grille guard and tighten all bolts with 75 lbs of torque. ( see figure 7 )

9) Align radiator and reinstall factory bolts removed in step 1.



Figure 7

**Installation Kit Provided:**

- |                              |                              |
|------------------------------|------------------------------|
| (1) mounting bracket right   | (4) 1/2" x 2" bolt           |
| (1) mounting bracket left    | (4) 1/2" x 5" bolt           |
| (1) top bracket right        | (8) 1/2" flat washers        |
| (1) top bracket left         | (8) 1/2" hex nuts            |
| (4) 7/16"x 2 1/4" bolt black | (2) 1/2" nylon hex nut black |
| (4) 7/16" hex nuts black     | (2) 1/2" x 1 1/2" bolt black |
| (8) 7/16" flat washers black | (2) 1/2" flat washer black   |